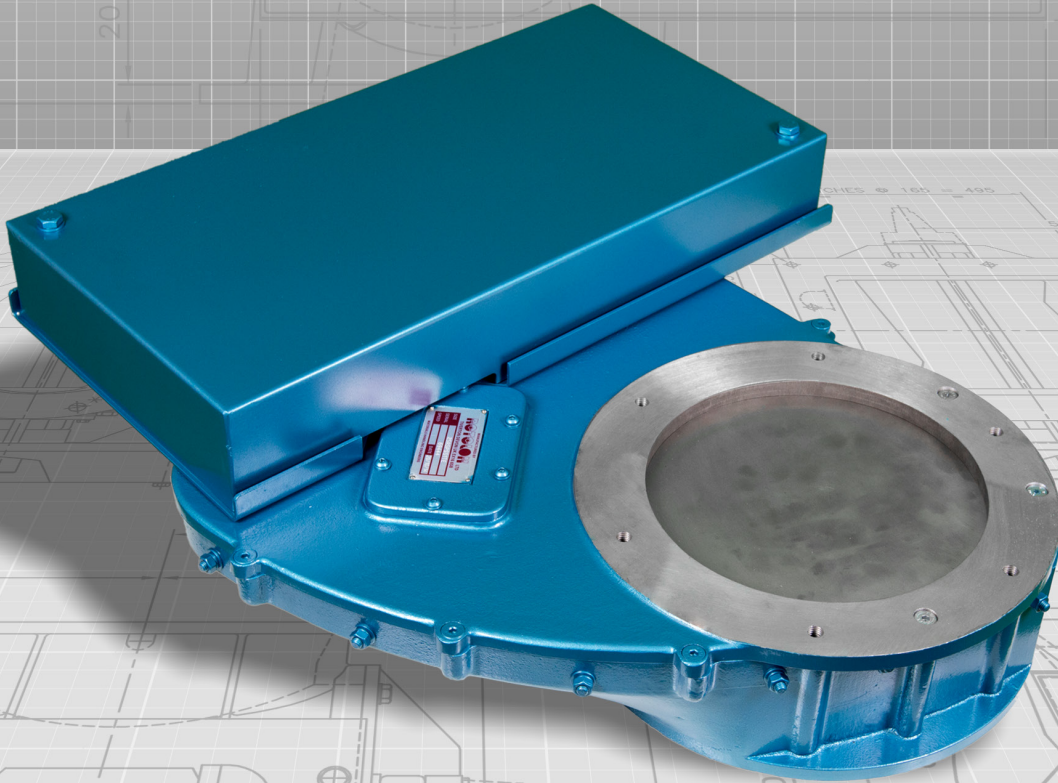




everything under control...



ROTOLOK ROTOSLIDE

**ROTOLOK USA**

Industrial Ventures II  
2711 Gray Fox Road  
Monroe  
North Carolina  
28110  
United States of America  
Tel: +1 (704) 282 4444  
Fax: +1 (704) 282 4242  
[www.rotolok.us](http://www.rotolok.us)  
[sales@rotolok.us](mailto:sales@rotolok.us)



## INTRODUCTION

Slide Valves are used for controlling the flow of powders, pellets and granules from the inlets or outlets of equipment.

Rotolok have been making an extensive range of fabricated units to suit the general industrial fields and the Rotoslide, manufactured in cast aluminum with stainless steel trim, specifically caters for the food and chemical industries.

Manufactured in five basic sizes: 6", 8", 10", 12" and 14" of circular inlet design and with either manual or pneumatic actuation.

## WHY ROTOSLIDE?

Rotolok's Rotoslide has a different concept than the majority of slide valves on the market, in as much that it is totally enclosed and, whether it is hand or pneumatically operated, the basic principal of using a pivot holds the slide plate in a positive fixed position, while the slide extremity is supported by nylon studs on stainless steel pins.

It has been designed to address the health and safety requirements for fugitive emissions with the slide plate always being enveloped, enclosed and dust tight to the surrounding environment.

## SPECIFICATIONS

### BODY

LM25 Cast Aluminum

### SLIDE PLATE

Stainless Steel

### SLIDE PLATE SUPPORT

Nylon studs supported by Stainless Steel screws

### HAND OPERATED

Positive easy action handle

### PNEUMATIC VERSION

One double acting cylinder rear clevis mounted

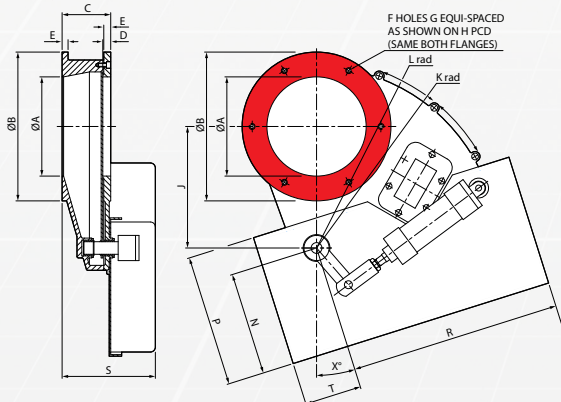
### SOLENOID VALVE (PNEUMATIC ONLY)

2 position 5 port single solenoid spring return

### LIMIT SWITCHES

Mounted to indicate open/closed position.  
Optional on manual version

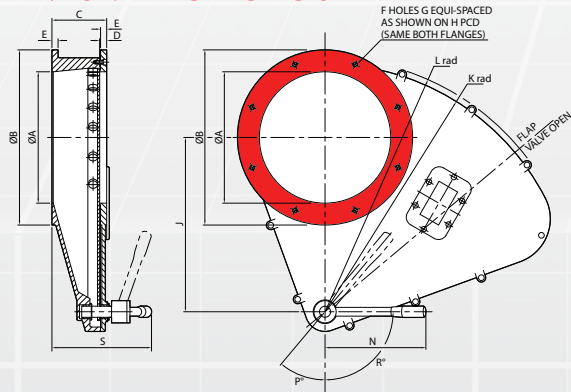
## PNEUMATIC ROTOSLIDE



All dimensions are in inches

SIZES	A	B	C	D	E	F	G	H	J	K	L	N	P	R	S	T	X°
6	5 1/8	9	3 1/8	5/8	1/2	6	M10	7 1/8	6 3/8	10	10 1/2	8 3/8	10 1/2	16 3/8	7 1/4	4 1/2	0°
8	7 1/8	11 3/4	3 1/8	5/8	1/2	6	M12	10 1/4	9 1/8	14 3/8	15	8 3/4	10 1/2	16 3/8	7 1/4	4 1/2	17.5°
10	9 1/8	13 3/4	5	5/8	1/2	6	M12	12 1/4	12 1/2	18 3/8	18 3/8	9 1/8	12 1/2	17 3/8	8 3/8	6 3/8	17.5°
12	11 1/8	15 3/4	5	5/8	1/2	8	M12	14 3/8	15 3/8	22 1/4	22 1/4	9 1/8	12 1/2	17 3/8	8 3/8	6 3/8	15°
14	13 3/4	20 3/4	5 1/2	7/8	3/4	12	M20	18 1/2	18 3/8	26 1/4	26 1/4	9 3/8	12 1/2	16 3/8	9 1/4	7 1/4	6°

## PNEUMATIC ROTOSLIDE



All dimensions are in inches

SIZES	A	B	C	D	E	F	G	H	J	K	L	N	P	R	S
6	5 1/8	9	3 1/8	5/8	1/2	6	M10	7 1/8	6 3/8	10	10 1/2	6 3/8	60	60	6 1/2
8	7 1/8	11 3/4	3 1/8	5/8	1/2	6	M12	10 1/4	9 1/8	14 3/8	15	7 1/4	45	60	7 1/4
10	9 1/8	13 3/4	4 1/8	5/8	1/2	6	M12	12 1/4	12 1/2	18 3/8	18 3/8	9	40	90	9
12	11 1/8	15 3/4	4 1/8	5/8	1/2	8	M12	14 3/8	15 3/8	22 1/4	22 1/4	9	40	90	9
14	13 3/4	20 3/4	5 1/2	7/8	3/4	12	M20	18 1/2	18 3/8	26 1/4	26 1/4	11 3/4	40	95	10 1/2

Dimensions are approximate and subject to change without notice  
Planning-in detail for general guidance only  
(To cover safety aspects ask for our safety leaflets)  
Drillings are Rotolok standards. Variations can be made.



[www.ROTOLOK.US](http://www.ROTOLOK.US)