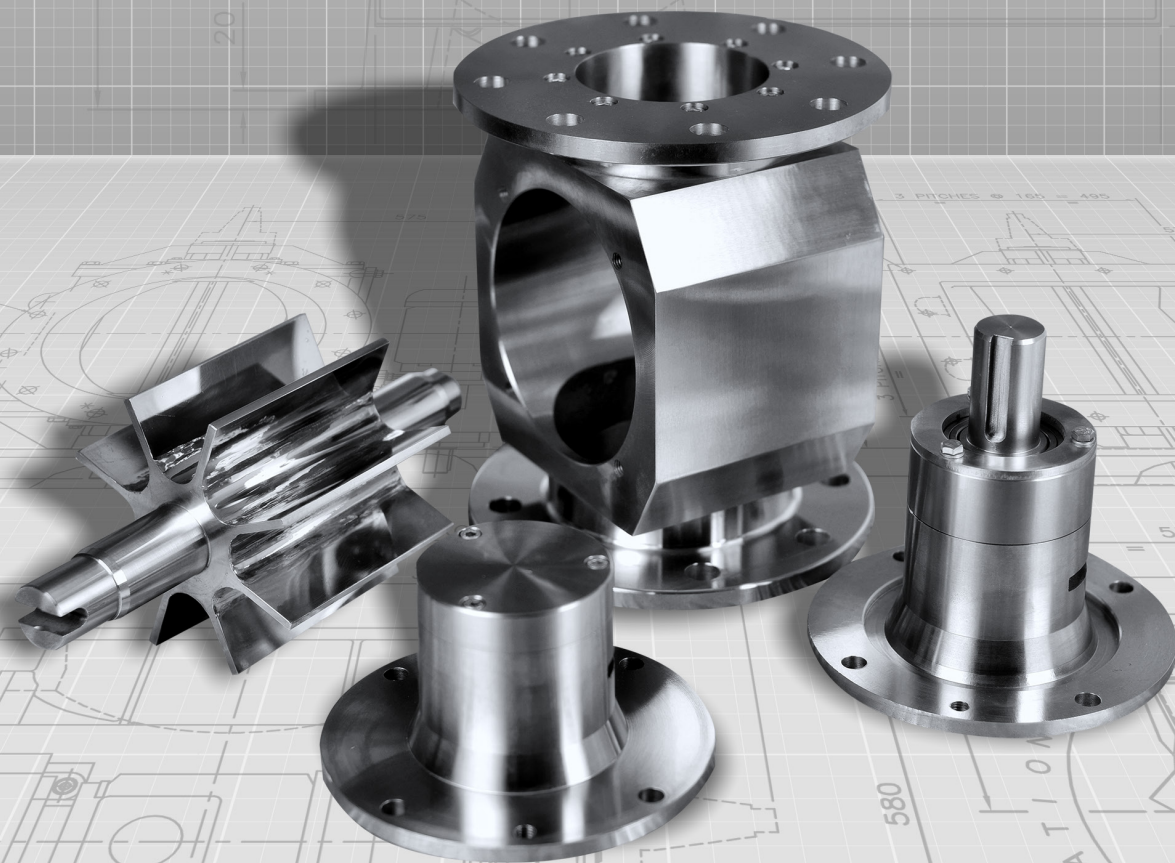




everything under control...



ROTOLOK USA

Industrial Ventures II
2711 Gray Fox Road
Monroe
North Carolina
28110
United States of America
Tel: +1 (704) 282 4444
Fax: +1 (704) 282 4242
www.rotolok.us
sales@rotolok.us



SANITARY ROTARY AIRLOCK

INTRODUCTION

The prime function of Rotary Airlocks is to regulate the flow of dust, powder and granular products from one chamber to another whilst maintaining a good airlock.

It is popularly used in pneumatic conveying systems, both vacuum and pressure, together with cyclone and filter applications.

However, the Sanitary Rotary Airlock is a more specialist airlock. Its modular design makes it an easy-clean airlock, aimed specifically at the food, chemical and pharmaceutical industries, where cleanliness, both internally and externally, must be to a high standard.

SANITARY ROTARY AIRLOCK

Rotolok manufactures a complete range of Rotary Airlocks and in the past, for hygienic applications, the standard range has been used, resulting in large costs being incurred to meet the food standards with regards to polishing etc.

The Sanitary Rotary Airlock is, by design, a different concept as it has been styled to ensure that all internal and external surfaces can be fully machined, creating smooth surfaces with no lodgement points and minimum 0.8Ra finish. This minimizes and simplifies polishing and enables the user to clean or wash the airlock quickly and easily.

The drive is normally direct coupled, making the complete assembly more compact and eliminating the need for motor mounting plates and bosses, which significantly complicate the external cleaning operation.

The Sanitary Rotary Airlock has a compact and modular design to reduce the time spent on disassembly when cleaning.

All airlocks of this model have the quick release rotor feature as standard.

SPECIFICATION

BODIES

Stainless Steel Precision Machined

ROTOR

Stainless Steel

END COVERS

Stainless Steel spigot located in body for concentricity

BEARINGS

Sealed-for-life ball type rigged outboard

DRIVE

Direct Drive Coupled

RANGE

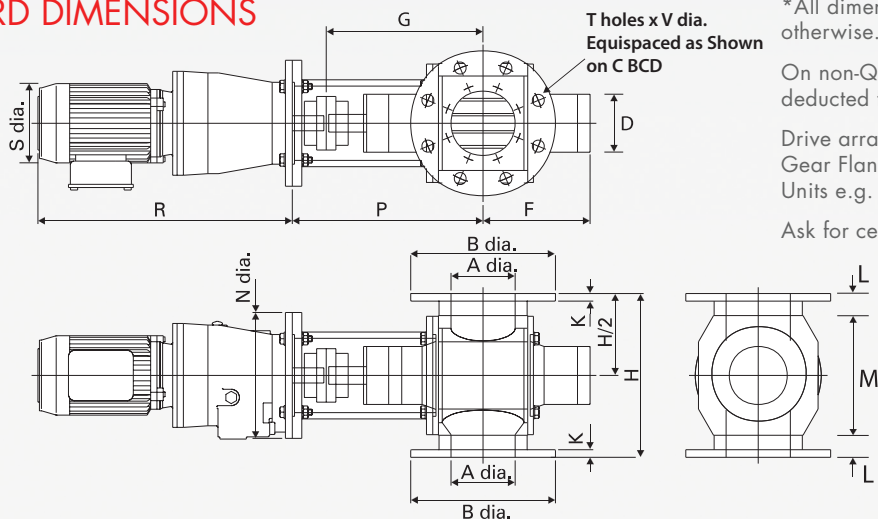
All Sanitary Rotary Airlocks are constructed from cast stainless steel with stainless steel rotors, to meet hygiene requirements. Standard range sizes, 3" to 10" diameter, but this will be extended to suit customer needs.

OPTIONS

- Chain Drive
- Easy release on Rails
- Air Purge Facility
- V.S. Drive
- Non-Quick Release



STANDARD DIMENSIONS



*All dimensions are in inches unless stated otherwise.

On non-Quick Release Models, 1 1/2" should be deducted from 'G' and 'P' dimensions.

Drive arrangement is for our Standard Helical Gear Flange Mounted Unit. Other Mounting Units e.g. Worm Boxes can be accommodated.

Ask for certified drawing.

SIZE	A	B	C	D	F	G	H	K	L	M	N	P	R	S	T	V	H.P.	ft ³ /rev
3	3	7 1/2	6	3 3/8	6	9	8 1/4	1/2	1 3/8	5 1/2	7 7/8	11 11/16	16 1/2	4 15/16	4	3/4	1/2	0.02
4	4	9	7 1/2	3 3/8	6 3/4	9 7/8	10 1/4	1/2	1 3/8	7 1/2	7 7/8	12	16 1/2	4 15/16	8	3/4	1/2	0.08
6	6	11	9 1/2	3 3/8	7 5/8	10 7/8	12 5/8	1/2	1 3/8	10 1/8	7 7/8	13 3/8	16 1/2	5	8	7/8	1/2	0.23
8	8	13 1/2	11 3/4	3 3/8	8 3/4	12 1/8	15 1/8	1/2	1 3/8	12 13/16	11 7/8	15	18 1/8	6 1/4	8	7/8	1	0.50
10	10	16	14 1/4	3 3/8	9 7/8	13 3/8	20 1/2	3/4	2	16 1/2	11 7/8	16 1/8	17 3/4	6 1/4	12	1	1	1.00

EASY RELEASE

The Sanitary Rotary Airlock is a staple of the Rotolok product range and the Easy Release model is a natural extension of it. The Easy Release rail system has already proven itself on our standard Rotary Airlocks as an effective and simple solution that eases cleaning and maintenance. The Easy Release function is simple and easy to use, so much so that it can be done by a single person reducing the amount of manpower required to perform cleaning.

Once the end cover has been unscrewed from the body it simply slides out on the rails with the Rotor attached. From here it is easy to clean the rotor, rotating it as needed to ensure that all blades and pockets are thoroughly cleaned.

The internals of the body can also be accessed while the rotor has been removed. Then when the internals have been cleaned, all that is left to do is slide the rotor back in and screw the end cover back to the body then normal operation can resume.



Sanitary Rotary Airlock with Easy Release Rails

Dimensions are approximate and subject to change without notice
Planning-in detail for general guidance only
(To cover safety aspects ask for our safety leaflets)
Drillings are Rotolok standards. Variations can be made.



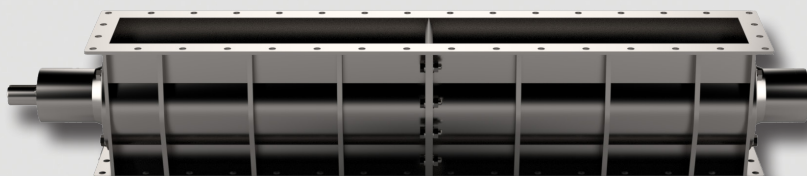
www.ROTOLOK.US

OTHER ROTOLOK PRODUCTS

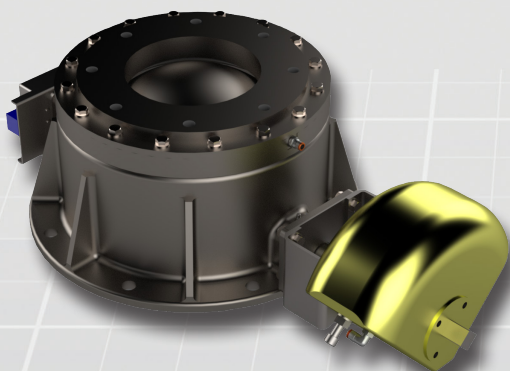
As well as the Sanitary Rotary Airlock, Rotolok manufacture and supply a range of other products in Stainless Steel for use in systems where cleanliness is key.

These include, but are not limited to: Slide Gates with Pneumatic, Motorised or Manual operation; Rotary Airlocks; Dust Collector Rotary Airlocks; Roundhead Valves; Blo-thru Rotary Airlocks and various Diverters.

For more information, please visit our website or contact our sales team.

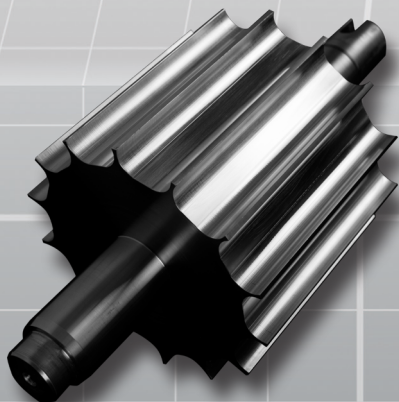
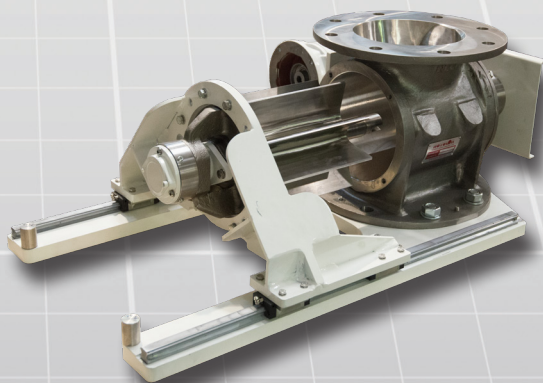


An example of a bespoke Rotary Airlock. This airlock has an elongated body, a special rotor design and custom operating speed.



Suited for pressure applications, the Roundhead valve is available in Stainless Steel as well as Cast Iron

A Stainless Steel Rotary Airlock with Easy Release system for heavier duty applications.



A special Stainless Steel Rotor. The Rotor has fourteen pockets, each of reduced capacity for rapid, consistent feeding.

