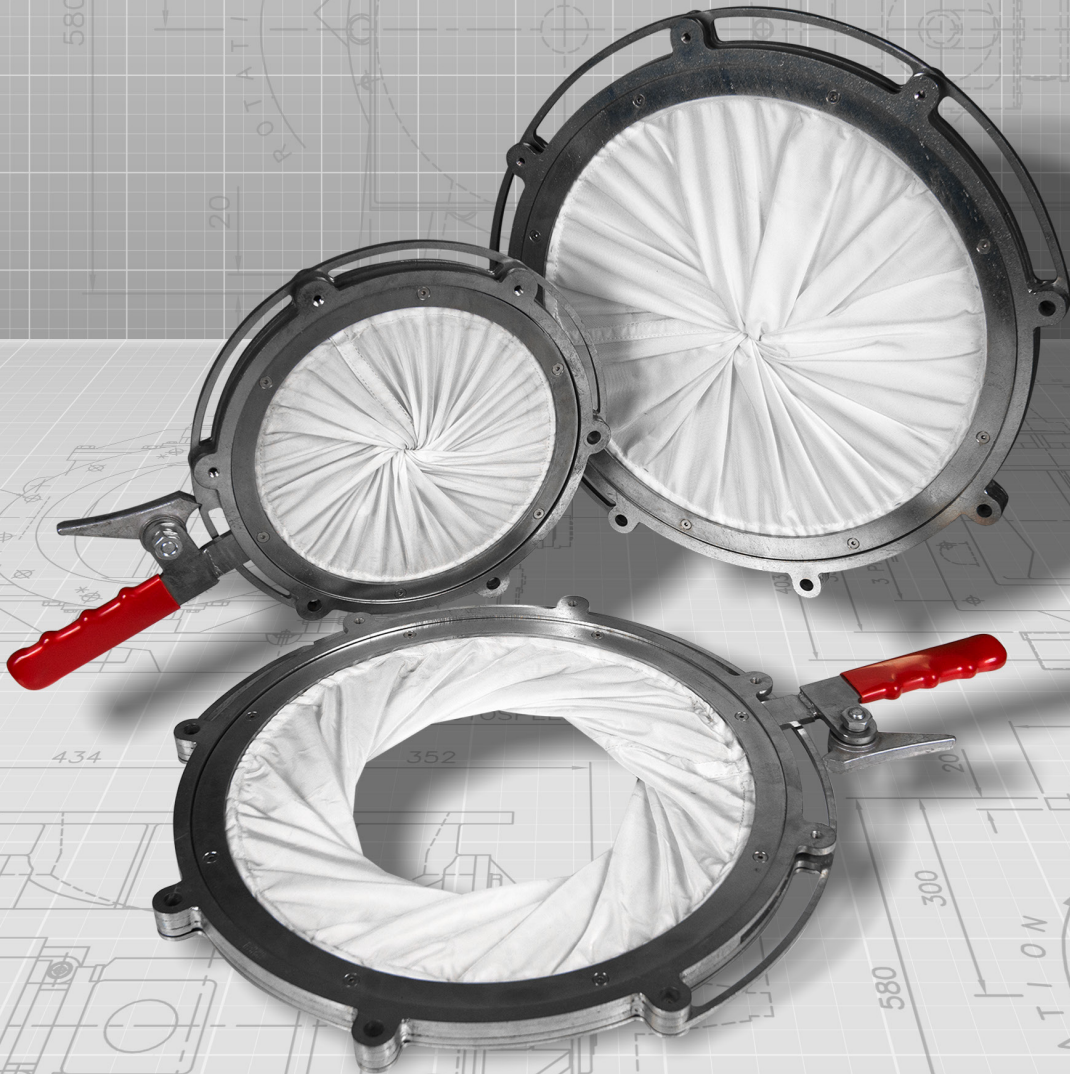




everything under control...



#### ROTOLOK USA

Industrial Ventures II  
2711 Gray Fox Road  
Monroe  
North Carolina  
28110  
United States of America  
Tel: +1 (704) 282 4444  
Fax: +1 (704) 282 4242  
[www.rotolok.us](http://www.rotolok.us)  
[sales@rotolok.us](mailto:sales@rotolok.us)



FLEXIBLE SLEEVE VALVES



## INTRODUCTION

The iris valve has proved itself over a number of years as a simple, reliable isolation or variable feed control valve on applications in the powder or air handling industries - its simplicity being its major advantage.

Iris valves are typically used on IBC and FIBC for controlling discharge. Full bore flow can be achieved by care must be taken to ensure mating gaskets or flanges do not interfere with the rotating ring or the sleeve.

The basic construction is that of a sleeve which is clamped at both ends to rings and on 180° rotation of one end completely seals against the very finest of powders and limited air pressure.

Partial rotation leads to partial opening and a multitude of different types of sleeve can be accommodated, the more common type of sleeves are woven nylon, rubber, anti-static or flameproof. These sleeves give good full opening properties and are dust tight.

Rotolok manufacture two types of iris valves for different applications: Rotoflex(RF) and Slimflex(SF).

## INSTALLATION

The Rotoflex and Slimflex valve are immediately ready for installation, however it is essential that the mating flange is flat and true so as not to impart unwanted stresses into the body causing warp and consequently difficult heavy duty loading on the rotating ring.

It is important that the flange fixings in the tapped holes are not too long and protrude into the handle movement area, preventing rotation.

In some cases, if wear becomes a major problem it may be preferable to install a false sleeve, thereby protecting the main sleeve and simplifying its replacement.

Pneumatic actuation is an option on the Rotoflex.

## DOUBLE SLEEVE OPTION

Double sleeve options is available on both the Rotoflex and Slimflex. It increases the head load capacity and completely seals the internals to atmosphere against fugitive emissions.

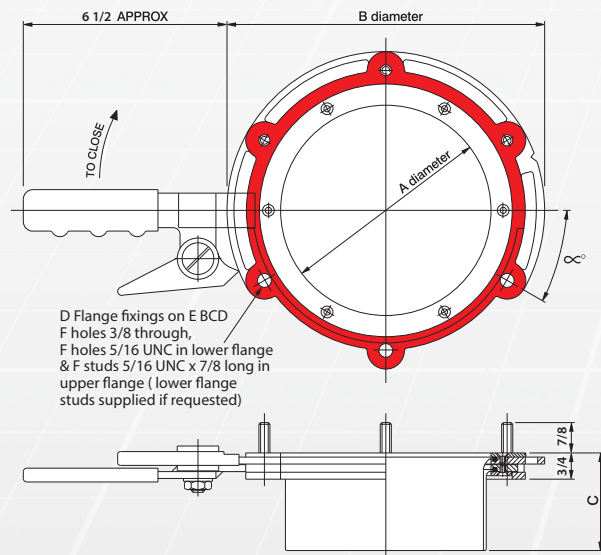
## SLIMFLEX IRIS VALVE

The Slimflex is a low-cost alternative to the Rotoflex, designed primarily for the needs of the IBC market. It is manufactured from mild or stainless steel laser cut rings providing a robust, yet lower duty valve. Mild steel parts are zinc coated.

The advantage of the Slimflex is that any size can be accommodated.

All dimensions are in inches

SIZES	A	B	C	D	E	F	∞°
4	4	7 1/4	2 3/8	4	6 1/8	2	45°
6	6	9	3 3/8	6	8	3	30°
8	8	11	4 3/8	6	10	3	30°
10	10	13 3/4	5 3/8	8	12 1/2	4	22.5°
12	12	15 3/4	6 3/8	8	14 1/2	4	22.5°
14	14	17 3/4	7 3/8	12	16 3/4	6	15°
15	15	18 11/16	4 3/8	12	17 3/4	6	15°
16	16	19 3/4	8 5/8	12	18 3/4	6	15°
18	18	21 3/4	10	12	20 3/4	8	11.25°



## MANUAL ROTOFLEX IRIS VALVE

The Rotoflex is constructed from cast aluminum. It is a high duty, hand operated valve for all powders and granules on open discharge systems.

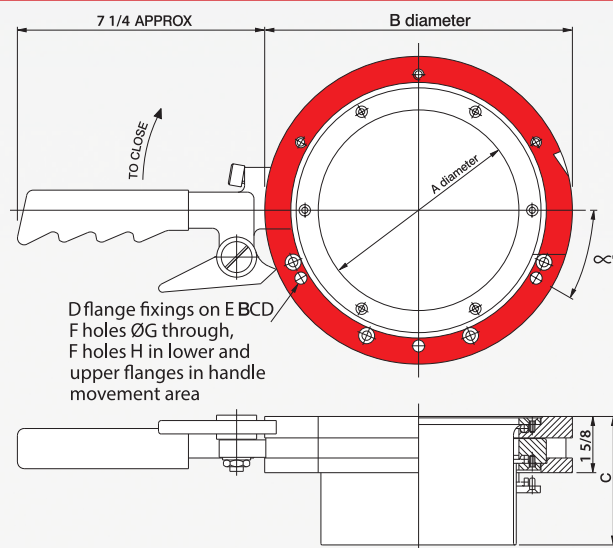
The Rotoflex lends itself particularly on filling applications. The sleeve is fixed with stainless steel clamping rings.

It can also be used on in-line systems but care must be taken to ensure mating gasket or flange does not interfere with the rotating clamping ring.

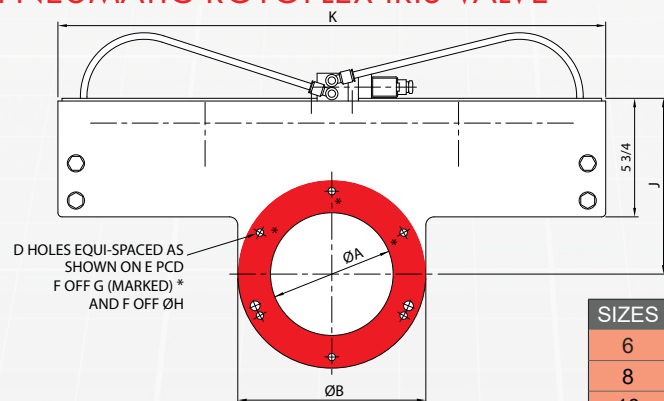
The main advantage of the Rotoflex is that it can be re-tensioned 'insitu'.

All dimensions are in inches

SIZES	A	B	C	D	E	F	G	H	∞°
6	5 7/8	9	2 3/4	6	8	3	3/8	M8	30°
8	7 7/8	11	4 3/4	6	10	3	3/8	M8	30°
10	9 7/8	13 3/4	5 3/4	8	12 7/8	4	7/16	M10	22.5°
12	11 7/8	15 3/4	6 3/4	8	14 7/8	4	7/16	M10	22.5°

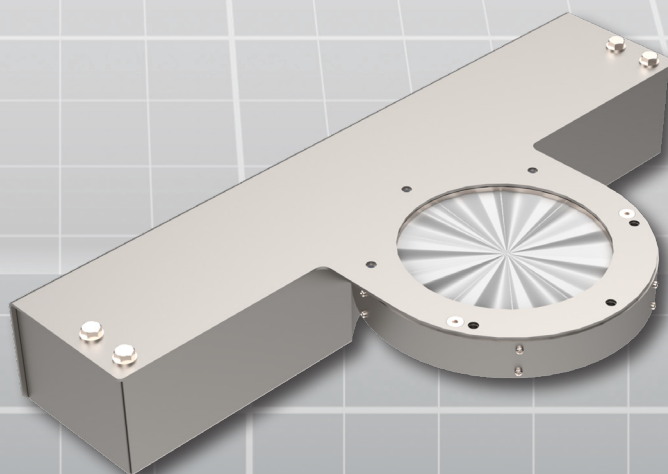


## PNEUMATIC ROTOFLEX IRIS VALVE



All dimensions are in inches

SIZES	A	B	C	D	E	F	G	H	J	K	L
6	5 7/8	9	3 3/8	6	8	3	M8	3/8	8 1/2	26 3/8	9 3/4
8	7 7/8	11	4 7/8	6	10	3	M8	3/8	9 1/2	29 1/2	10 3/4
10	9 7/8	13 3/4	5 7/8	8	12 7/8	4	M10	7/16	10 7/8	33 7/8	12 1/8
12	11 7/8	15 3/4	6 7/8	8	14 7/8	4	M10	7/16	11 7/8	36 7/8	13



Dimensions are approximate and subject to change without notice  
Planning-in detail for general guidance only  
(To cover safety aspects ask for our safety leaflets)  
Drillings are Rotolok standards. Variations can be made.



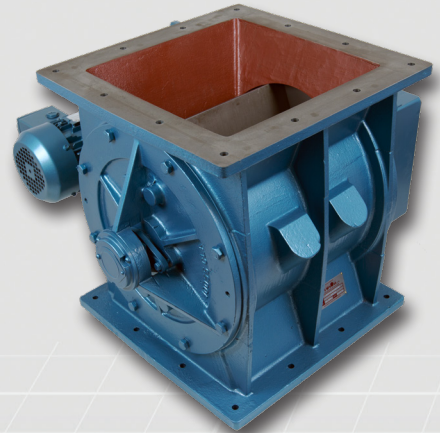
## OTHER ROTOLOK PRODUCTS

As well as the Iris Valves, Rotolok manufacture and supply a range of other products in for use in conveying systems.

These include, but are not limited to: Slide gates with Manual, Pneumatic or Motorized operation, Rotary Valves; Dust Collector Valves; Roundhead Valve; Blowing Seals and various Diverter Valves.

For more information, please visit our website or contact our sales team.

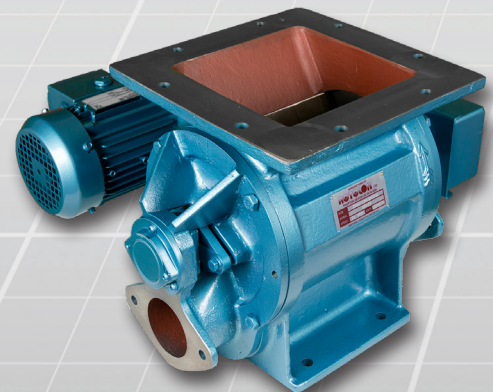
A Standard Rotary Valve that can be made to suit most applications with a variety of construction materials and rotors



A Cast Iron conveying diverter valve. Available with flanged or spigotted connections to fit existing conveying systems



A typical Blowing Seal with a square inlet used in pneumatic conveying systems.



A Standard Plug Diverter Valve. The valve has a rugged cast iron body and is suitable for abrasive or high pressure applications

