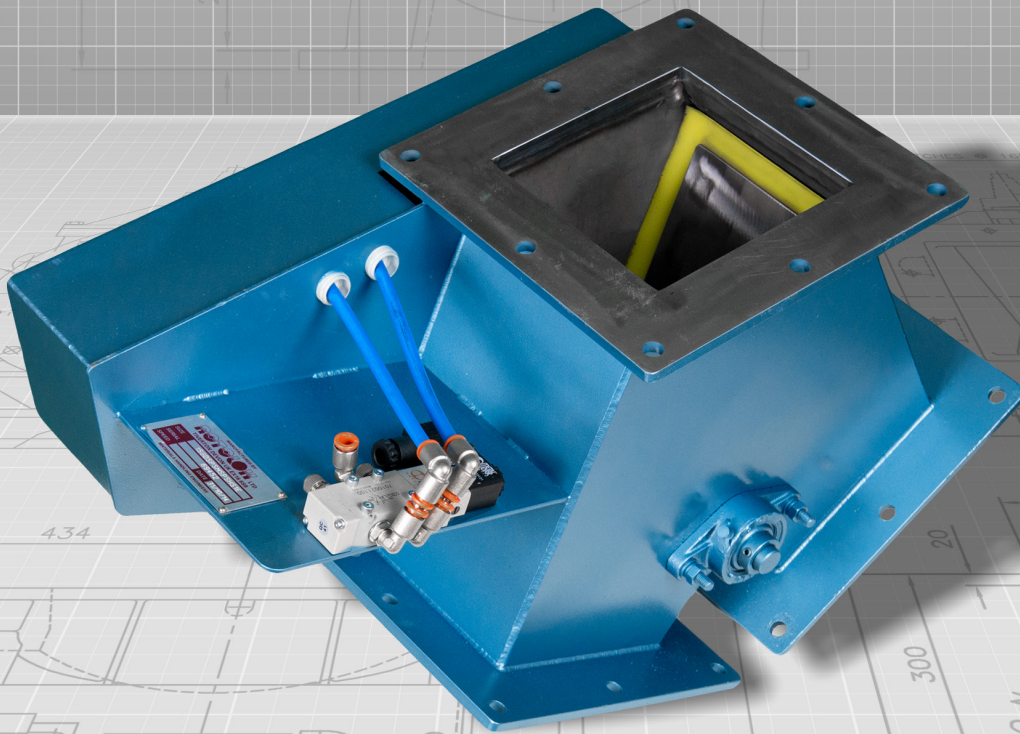


ROTOLOK

everything under control...



ROTOLOK USA

Industrial Ventures II
2711 Gray Fox Road
Monroe
North Carolina
28110
United States of America
Tel: +1 (704) 282 4444
Fax: +1 (704) 282 4242
www.rotolok.us
sales@rotolok.us



GRAVITY DIVERTER VALVES



INTRODUCTION

Gravity Diverter Valves are used in the bulk handling field to re-route powders, pellets or granular materials from one discharge point to a choice of others.

Being of fabricated design Rotolok can accommodate many variations and options relating to divert angles, inlet sizes and form (square, rectangular and circular etc.).

The internal flap is manufactured with two plates sandwiching a polyurethane wiper seal, to ensure there is adequate sealing to the non-operational leg. The whole assembly is mounted on the main spindle which is supported externally by two sealed for life 2-bolt flanged bearings.

The pneumatically operated unit is actuated by an air cylinder complete with solenoid valve and internal piping. Limit switches are also fitted as standard equipment to indicate flap divert position.

The manual version is operated by a smooth action handle with locking facilities and optional limit switches.

All pneumatics and electrical switches are fully enclosed for safety reasons.

STANDARD FEATURES

- Divert angle ensures good flow conditions
- Compact rugged design
- Smooth internals with negligible lodgement areas
- Minimal maintenance
- Pneumatic or manual versions
- Good sealing effect

SPECIFICATION

BODIES

Fabricated in Mild or Stainless Steel

FLAP PLATES AND SPINDLE

Mild or Stainless Steel

WIPER SEAL

Polyurethane or food quality rubber

ACTUATION

Air cylinder or manual

PNEUMATIC VERSION

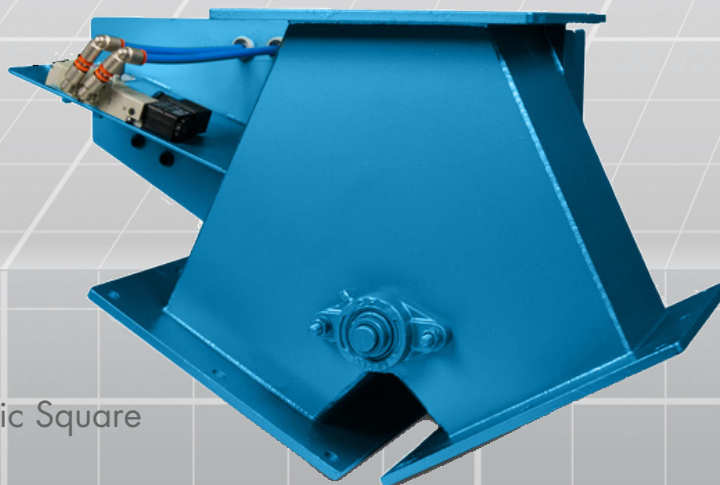
Complete with 5 port, two-position single solenoid spring return valve

LIMIT SWITCHES

Fitted to indicate flap divert position

RANGE

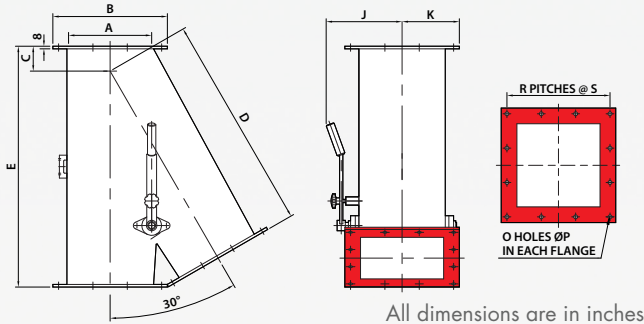
Manufactured in four basic sizes based on a 30° divert angle. As the units are fabricated, versions can be tailor made to suit specific duties and needs. Divert angles can be changed to suit the application and the product being handled and options on inlet and outlet formats and flanges can be accommodated. Rotolok produces what you need to suit your application.



30 X 30 Pneumatic Square



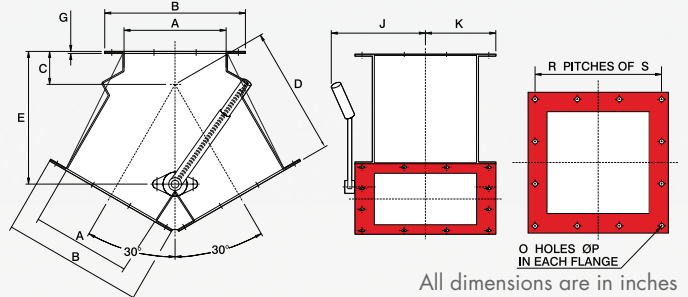
0 x 30 MANUAL SQUARE



All dimensions are in inches

SIZE	A	B	C	D	E	J	K	O	P	R	S
6	6	9 7/8	2 3/4	18 3/4	21 1/2	7 1/4	4 1/16	8	1/2	2	4 3/16
8	8	11 3/4	3	22 1/4	25 1/4	8 3/4	5 7/8	2	1/2	3	3 3/16
10	10	13 3/4	3	26	29	9 3/4	6 7/8	2	1/2	3	4 1/8
12	12	16	3	32 1/2	35 1/2	10 3/8	8	2	1/2	3	4 3/4

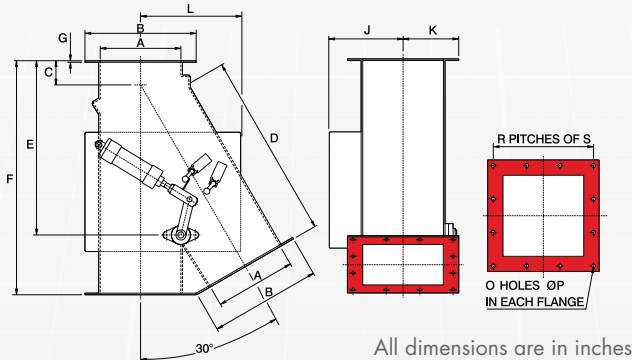
30 x 30 MANUAL SQUARE



All dimensions are in inches

SIZE	A	B	C	D	E	G	J	K	O	P	R	S
6	6	9 7/8	2 3/4	8 7/8	9 1/16	3/8	7 1/4	4 1/16	8	1/2	2	4 3/16
8	8	11 3/4	2 1/16	11 1/8	11 1/4	3/8	8	5 7/8	10	1/2	3	3 3/16
10	10	13 3/4	3 1/4	12 3/8	13	3/8	9 1/4	6 7/8	12	1/2	3	4 1/8
12	12	16	3 3/16	15 7/16	15 3/8	3/8	10 1/4	8	12	1/2	3	4 3/4
14	14	18	3 1/2	17	17	3/8	12	9	12	1/2	3	5 1/2

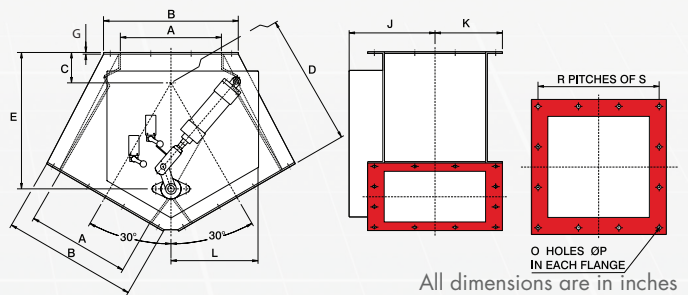
0 x 30 PNEUMATIC SQUARE



All dimensions are in inches

SIZE	A	B	C	D	E	F	G	J	K	L	O	P	R	S
6	6	9 9/16	2 3/4	18 3/4	21 1/2	3/8	7 3/4	4 1/8	13 3/8	8	1/2	2	4 3/16	
8	8	11 3/4	3	22 1/4	18	25 1/4	3/8	8 3/4	5 7/8	10 3/4	12	1/2	3	3
10	10	13 3/4	3	26	21 3/8	29	3/8	9 1/2	6 7/8	10 1/4	12	1/2	3	4 1/8
12	12	16	3	32 1/2	25 1/16	35 1/2	3/8	11 1/8	8	11 1/16	12	1/2	3	4 3/4
14	14	18	4 1/4	34 3/16	30 3/8	38 7/16	3/8	12 1/8	9	13	12	1/2	3	5 1/2

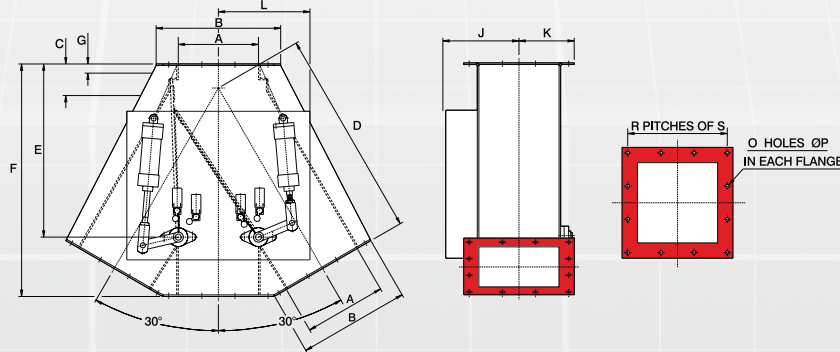
30 x 30 PNEUMATIC SQUARE



All dimensions are in inches

SIZE	A	B	C	D	E	G	J	K	L	O	P	R	S
6	6	9 13/16	2 3/4	10 1/16	9 9/16	3/8	7 3/8	4 1/16	14	8	1/2	4	4 3/16
8	8	11 3/4	2 15/16	11 1/8	11 3/16	3/8	8 1/2	5 7/8	12 3/8	12	1/2	3	3 3/16
10	10	13 3/4	3 1/4	12 3/8	13	3/8	9 1/2	6 7/8	10 3/8	12	1/2	3	4 1/8
12	12	16	3 3/16	15 7/16	15 3/8	3/8	10 1/2	8	6 1/2	12	1/2	3	4 3/4
14	14	18	3 1/2	17	17	3/8	12 3/8	9	11 3/16	12	1/2	3	5 1/2
16	16	19 3/8	5 1/8	19 3/8	20 3/4	3/8	13 1/8	10	9 9/16	16	1/2	4	4 3/4
18	18	22	7	19 3/4	24	3/8	14 3/8	11	15 5/8	16	1/2	4	5

30 x 0 x 30 PNEUMATIC SQUARE



All dimensions are in inches

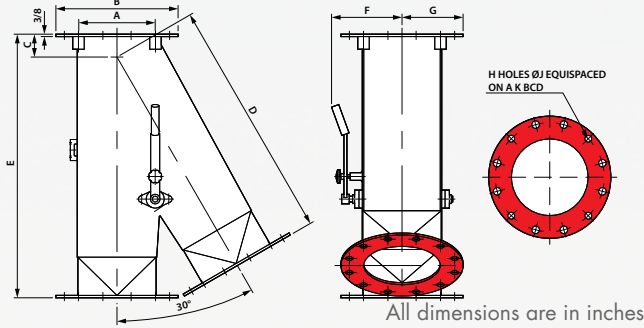
SIZE	A	B	C	D	E	F	G
6	6	9 7/8	2 3/4	18 3/4	13 3/8	21 1/2	13/16
8	8	11 3/4	3	22 1/4	18	25 1/4	2
10	10	13 3/4	4 7/8	26 1/8	21 3/8	29 1/8	3
12	12	16	8 7/8	32 1/2	25 3/8	35 1/2	3

SIZE	J	K	L	O	P	R	S
6	8 1/2	4 1/16	14	8	1/2	2	4 3/16
8	8 1/2	5 7/8	9 11/16	12	1/2	3	3 3/16
10	9 1/2	6 7/8	11 1/16	12	1/2	3	4 1/8
12	10 3/8	8	15 1/16	12	1/2	3	4 3/4

Dimensions are approximate and subject to change without notice
 Planning-in detail for general guidance only
 (To cover safety aspects ask for our safety leaflets)
 Drillings are Rotolok standards. Variations can be made.

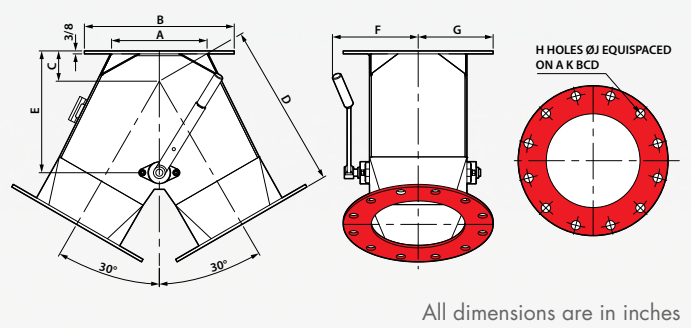


0 x 30 MANUAL ROUND



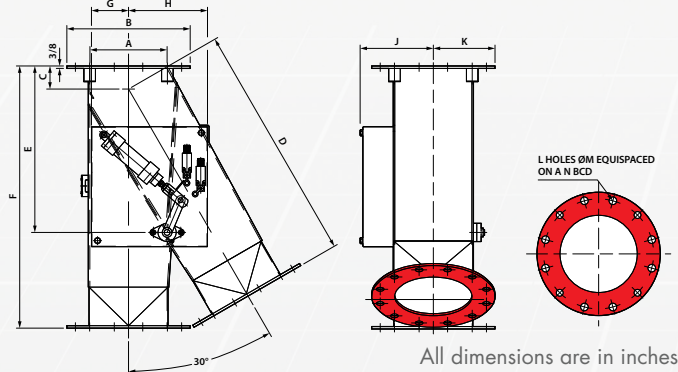
SIZE	A	B	C	D	E	F	G	H	J	K
4	4	9	3 ½	18 ¼	21 ¼	7 ¾	4 ½	8	¾	7 ½
6	6	11	2 ¾	22	24 ¼	7 ¼	5 ½	8	¾	9 ½
8	8	13 ½	3	26 ¼	29 ¼	8 ¾	6 ¾	8	¾	11 ¾
10	10	16	3	31 ½	34 ½	9 ¼	8	8	¾	14 ¼

30 x 30 MANUAL ROUND



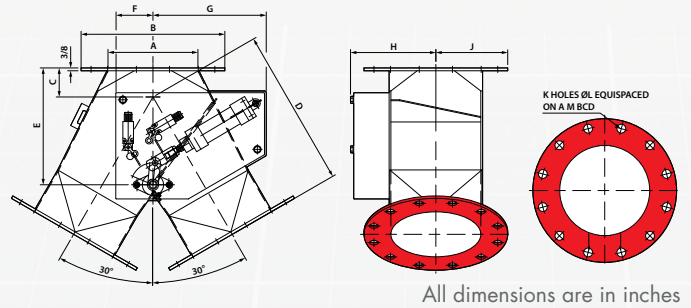
SIZE	A	B	C	D	E	F	G	H	J	K
6	6	11	2 ¾	11 ¾	9 ¾	7 ¼	5 ½	8	¾	9 ½
8	8	13 ½	3	15 ¼	11 ¼	8 ¾	6 ¾	8	¾	11 ¾
10	10	16	3 ¼	17 ¾	13	9 ¾	8	12	1	14 ¼
14	14	21	5 ½	23 ¼	18 ¾	12	10 ½	12	1 ½	18 ¾

0 x 30 PNEUMATIC ROUND



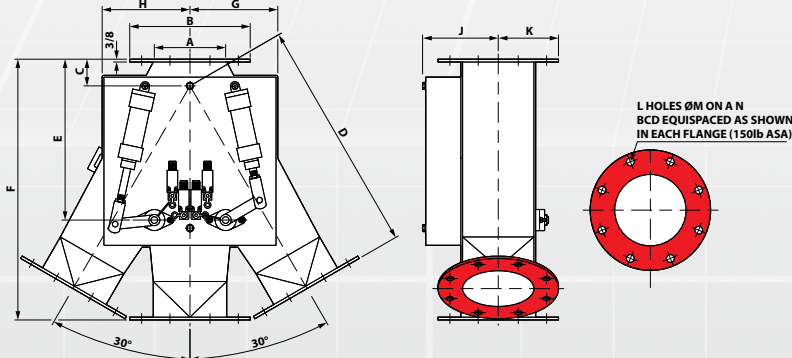
SIZE	A	B	C	D	E	F	G	H	J	K	L	M	N
6	6	11	2 ¾	22 ¼	13 ¾	24 ¼	2 ¾	13 ¾	7 ¾	5 ½	8	¾	9 ½
8	8	13 ½	3	26 ¼	18	29 ¼	5 ¾	12 ¾	8 ¾	6 ¾	8	¾	11 ¾
10	10	16	3	32 ½	21 ¾	34	4 ¾	10 ¼	9 ½	8	12	1	14 ¼
12	12	19	5	38 ½	27 ¾	43 ½	7 ¾	14 ¾	11 ¾	9 ½	12	1	17

30 x 30 PNEUMATIC ROUND



SIZE	A	B	C	D	E	F	G	H	J	K	L	M
6	6	11	2 ¾	11 ¾	9 ¾	4 ¾	14	7 ¾	5 ½	8	¾	9 ½
8	8	13 ½	2 ¾	15 ¼	11 ¼	4 ¾	12 ¾	8 ¾	6 ¾	8	¾	11 ¾
10	10	16	3 ¼	17 ¾	13	4 ¾	12 ¾	9 ¾	8	12	1	14 ¼
12	12	19	5 ½	21 ¾	16 ¾	5 ¾	10	10 ¾	9 ½	12	1	17
14	14	21	5 ½	23 ¼	18 ¾	6 ¾	11 ¾	12 ¾	10 ½	12	1 ½	18 ¾
16	16	23 ½	5 ¾	25	21 ¾	7	9 ¾	13 ¾	11 ¾	16	1 ½	21 ¼

30 x 0 x 30 PNEUMATIC ROUND



SIZE	A	B	C	D	E	F
6	6	11	2 ¾	22 ¼	13 ¾	24 ¼
8	8	13 ½	3	26 ¼	18	29 ¼
10	10	16	3	31 ½	21 ¾	34 ½

SIZE	G	H	J	K	L	M	N
6	14	9 ¾	8 ½	5 ½	8	¾	9 ½
8	9 ¾	9 ¾	8 ½	6 ¾	8	¾	11 ¾
10	11 ¾	11 ¾	9 ½	8	12	1	14 ¼

Dimensions are approximate and subject to change without notice
 Planning-in detail for general guidance only
 (To cover safety aspects ask for our safety leaflets)
 Drillings are Rotolok standards. Variations can be made.

