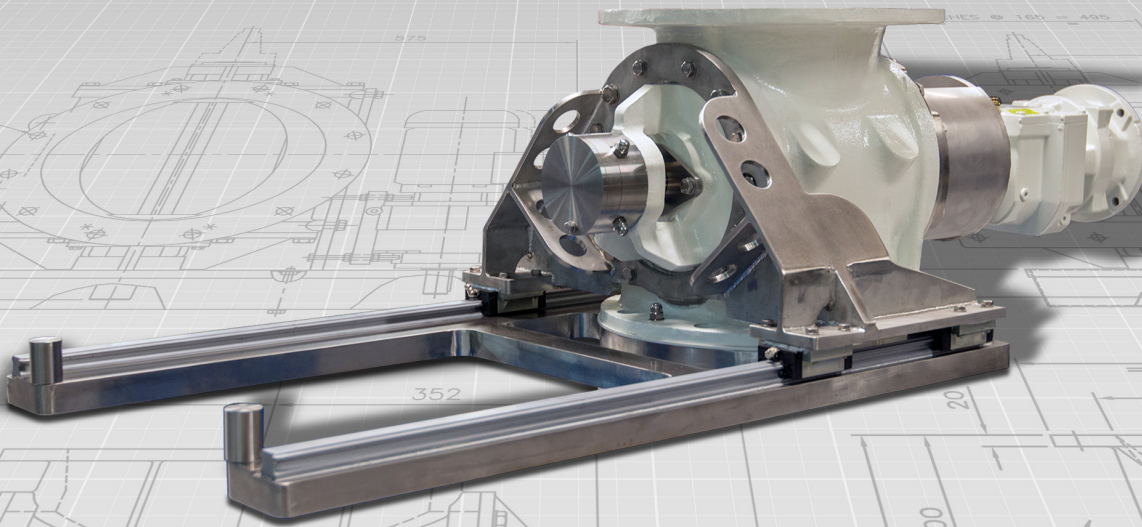




everything under control...



ROTOLOK USA

Industrial Ventures II
2711 Gray Fox Road
Monroe
North Carolina
28110
United States of America
Tel: +1 (704) 282 4444
Fax: +1 (704) 282 4242
www.rotolok.us
sales@rotolok.us



ROTOLOK USDA ROTARY AIRLOCK



INTRODUCTION

Here at Rotolok, we constantly strive to improve the quality of our equipment and obtain the required and industry recognized certification to provide specialist airlocks. In February 2018, Rotolok gained approval and certification from the United States Department of Agriculture (USDA) to supply Rotary Airlocks for use in the dairy, food and chemical industries in the United States.

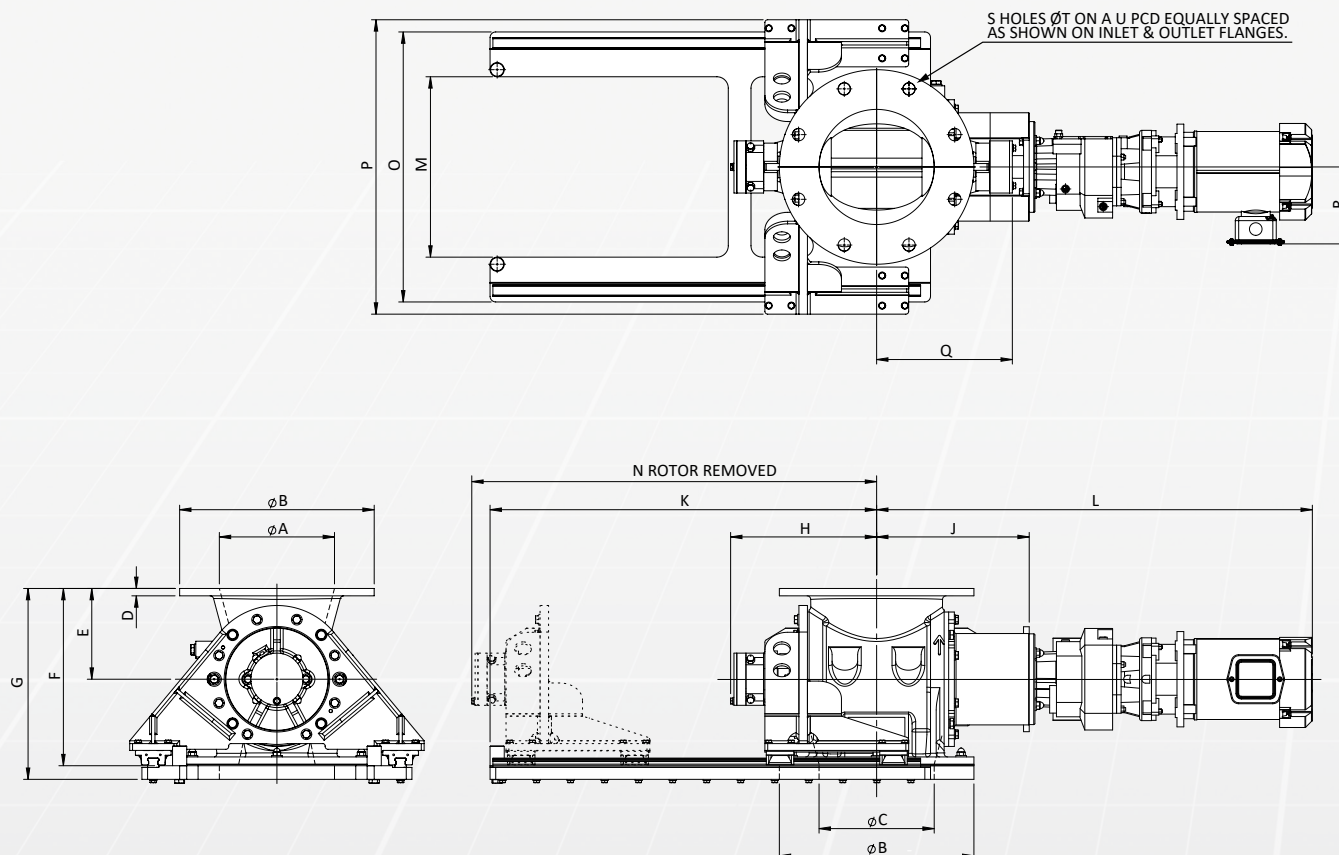
Rotolok's USDA Dairy Accepted line of Rotary Airlocks are designed for use in sanitary applications in the food, dairy, pharmaceutical and chemical industries where regular cleaning is required to prevent product contamination.

AIRLOCK CONSTRUCTION

The product contact surfaces of the airlock are manufactured in 316 Stainless Steel and polished to a 150 grit finish, ensuring that there are no lodgement points allowing the product to flow smoothly. Furthermore, the airlock is equipped with a slide rail mechanism allowing for the quick and easy removal of the rotor from the airlock body. This addition substantially reduces the amount of downtime and the number of man hours required for the cleaning and maintenance of the rotor and airlock internals.

Our USDA certified Rotary Airlocks are available in sizes ranging from 6" up to 16".

USDA AIRLOCK DIAGRAM



*All dimensions are in inches unless stated otherwise.

SIZE	ØA	ØB	ØC	D	E	F	G	H	J	K	L	M	N	O	P	Q	R	S	ØT	U
6"	6"	11 1/4"	6"	1/2"	5 1/2"	10 3/4"	11 5/8"	9"	10 1/8"	22 1/16"	29 3/16"	10 1/16"	24 3/16"	16 7/16"	18 1/4"	18 1/16"	5 1/2"	8	7/8"	9 1/2"
8"	8"	13 1/2"	8"	1/2"	6 7/16"	12 1/16"	13 1/4"	10 1/8"	10 1/16"	26 7/16"	30 1/4"	12 1/2"	28 7/16"	18 3/4"	20 1/16"	9 7/16"	5 1/2"	8	7/8"	11 1/4"
10"	10"	16"	10"	5/8"	7 7/16"	15 1/16"	16"	11 1/8"	12 3/16"	30 3/16"	36 1/4"	15"	31 1/16"	21 1/4"	22 1/16"	10 1/16"	5 1/2"	12	1"	14 1/4"
12"	12"	19"	12"	3/4"	9 7/16"	18 7/16"	19 5/8"	12 7/16"	13 9/16"	34 3/16"	37 7/16"	17 11/16"	35 13/16"	23 19/16"	25 5/16"	11 19/16"	5 1/2"	12	1"	17"
14"	14"	21"	14"	3/4"	10 5/16"	20 1/16"	21 3/4"	12 13/16"	13 19/16"	34 3/16"	38 1/16"	19 3/4"	36 1/4"	26"	27 1/16"	12 3/16"	5 1/2"	12	1 1/8"	18 3/4"
16"	16"	23 1/2"	16"	13/16"	11 13/16"	22 15/16"	24 1/16"	15 7/16"	16 9/16"	40 1/16"	41 3/4"	14 15/16"	42 15/16"	28 7/16"	30 1/16"	14 7/16"	5 1/2"	16	1 1/8"	21 1/4"

Dimensions are approximate and subject to change without notice

Planning-in detail for general guidance only

(To cover safety aspects ask for our safety leaflets)

Drillings are Rotolok standards. Variations can be made.



www.ROTOLOK.us