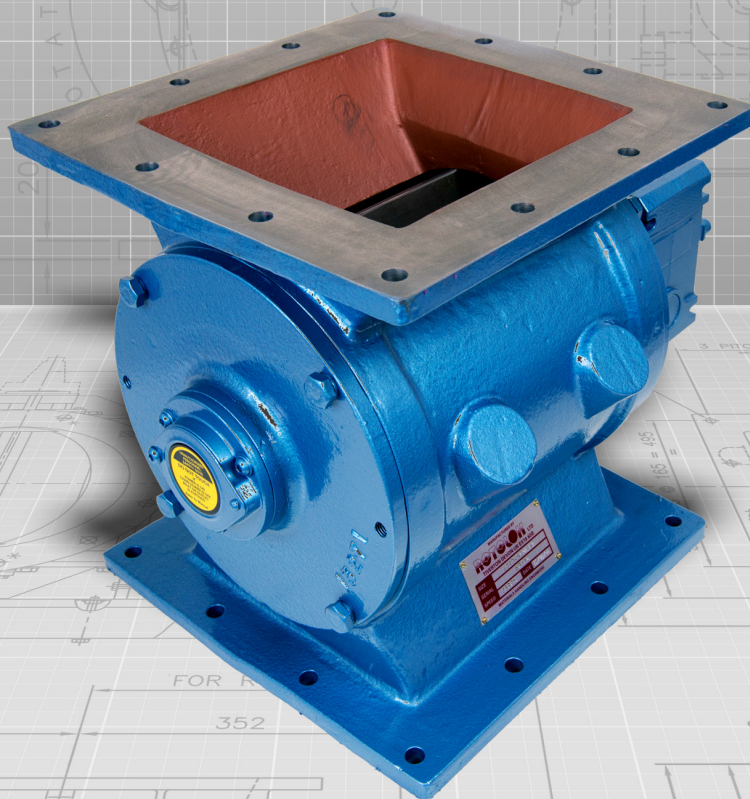




everything under control...



DUST COLLECTOR VALVE



ROTOLOK USA

Industrial Ventures II
2711 Gray Fox Road
Monroe
North Carolina
28110
United States of America
Tel: +1 (704) 282 4444
Fax: +1 (704) 282 4242
www.rotolok.us
sales@rotolok.us



INTRODUCTION

The Dust Collector Valve is designed specifically for lighter duty applications, such as gravity flow or bottom of dust collectors handling light loads and non-abrasive products.

These units have direct drive right angle gearboxes, inboard bearings and lip seals; making them very cost competitive.

These dust collector valves have been engineered and designed solely as a low cost solution for applications with pressure differentials of 3 psi or less.

Rotolok can offer a range of Dust Collector Valves meeting NFPA explosive standards. Please contact us for further details.

SPECIFICATION

The general market place covers Cyclones, Bag Houses and Gravity Feed applications with pressures around +/- 3 psi

Body

Cast Iron Precision Bored

End Covers

Cast Iron Precision Machined and Spigot Located into Valve Body

Rotor

Fabricated Mild Steel Closed (Shrouded) Type Fully Machined

Bearings

Ball Type Rigged Inboard Sealed for Life

Seal

Shaft Seals Rubber Lip Type

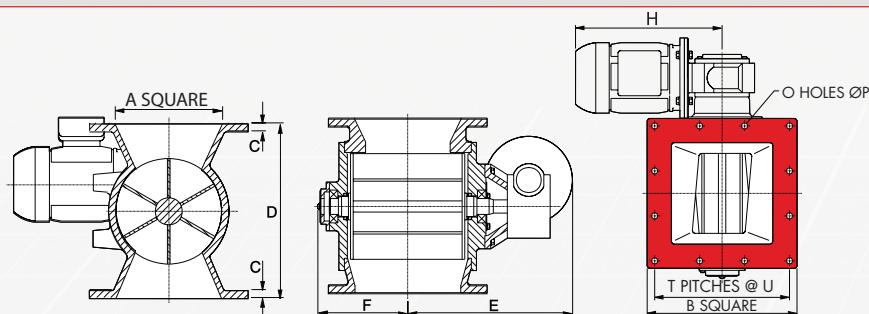
Drive

Motorised Worm Box Shaft Mounted on Rotor and Fitted with Standard Nema Motor TEFC 230/460 volt, 3 phase, 60 Hz Flange Mounted to Worm Box

Valve HP & Speed

Sizes 6" & 8" - 1/2 Hp @ 28 RPM
Sizes 10" & 12" - 3/4 Hp @ 29 RPM

SQUARE INLET

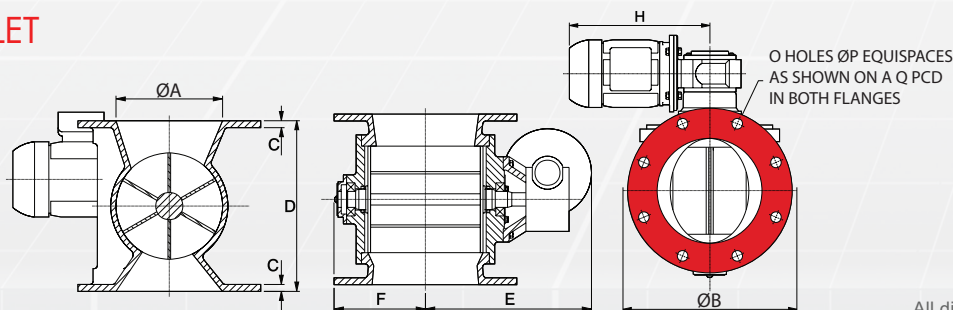


All dimensions are in Inches

SIZE	ft ³ /hr @ 1 rpm	H/P	A	B	C	D	E	F	H	O	P	T	U	WEIGHT (lbs)
6"	5	1/2	6"	9 7/8"	1 1/2"	11"	11 5/8"	5 3/4"	14"	12	1/2"	3	2 3/4"	152
8"	12.7	1/2	8"	11 7/8"	5/8"	13"	12 5/8"	6 3/4"	14"	12	1/2"	3	3 9/16"	183
10"	25.6	3/4	10"	13 1/4"	5/8"	15"	13 13/16"	8"	15"	12	9/16"	3	4"	256
12"	45.4	3/4	12"	15 3/4"	1 1/2"	18 1/8"	15 1/4"	9 5/16"	15"	12	1/2"	3	4 11/16"	386

*Conversion: Divide cubic feet/hr by 35.31 to obtain cubic metre/hr.

CIRCULAR INLET



All dimensions are in Inches

SIZE	ft ³ /hr @ 1 rpm	HP	A	B	C	D	E	F	H	O	P	Q	WEIGHT (lbs)
6"	5	1/2	6"	11 1/4"	1 1/2"	10 5/8"	11 5/8"	5 3/4"	14"	8	7/8"	9 1/2"	152
8"	12.7	1/2	8"	12 1/2"	1 1/2"	12 5/8"	12 5/8"	6 3/4"	14"	8	1 1/16"	11"	183
10"	25.6	3/4	10"	14 1/2"	5/8"	15"	13 13/16"	7 7/8"	15"	8	1 1/16"	12 5/8"	256
12"	45.4	3/4	12"	17 3/8"	3/4"	18 3/8"	15 1/4"	9 5/16"	15"	12	7/8"	15 1/2"	386

Dimensions are approximate and subject to change without notice
Planning-in detail for general guidance only
(To cover safety aspects ask for our safety leaflets)
Drillings are Rotolok standards. Variations can be made.



www.ROTOLOK.us