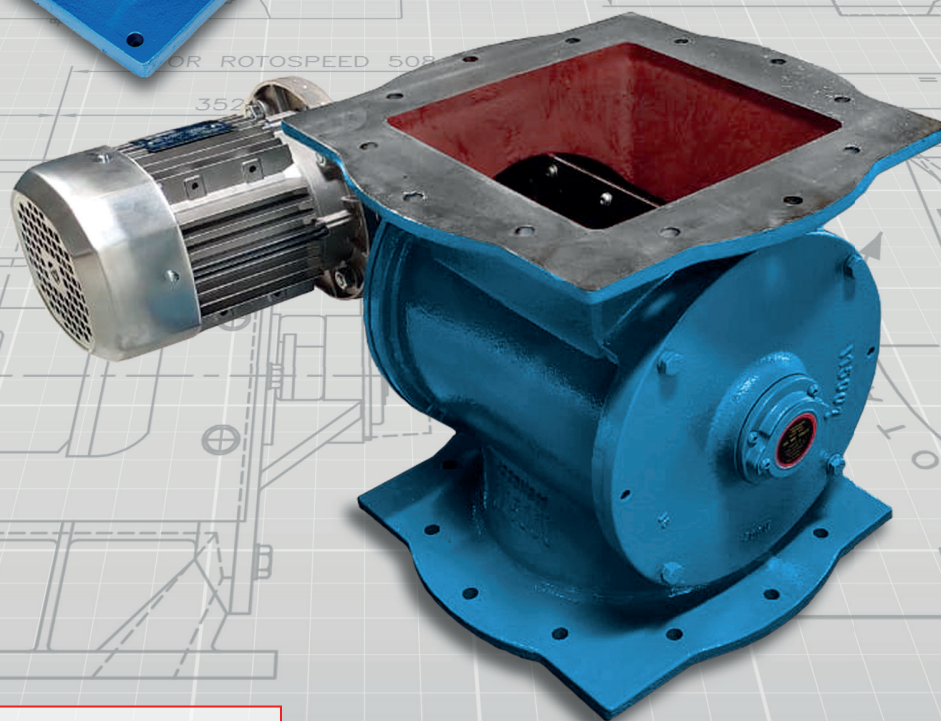
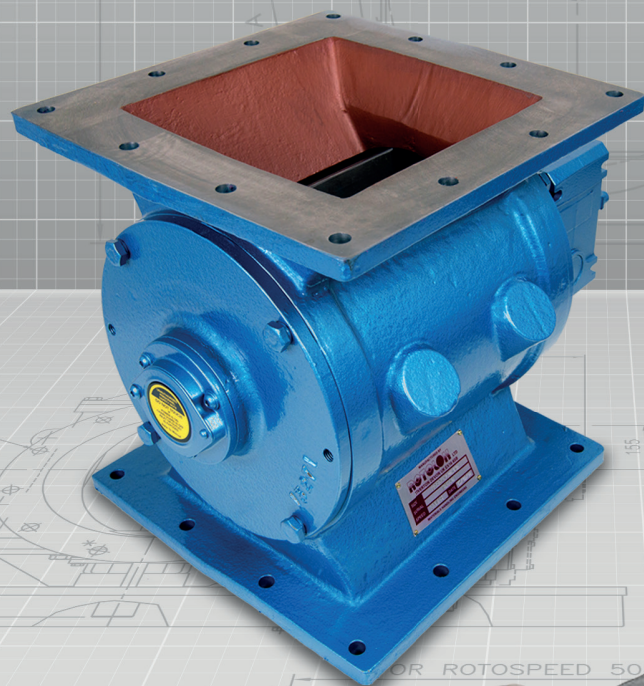


ROTOLOK

everything under control...



ROTOLOK USA

Industrial Ventures II
2711 Gray Fox Road
Monroe
North Carolina
28110
United States of America
Tel: +1 (704) 282 4444
Fax: +1 (704) 282 4242
www.rotolok.us
sales@rotolok.us



DUST COLLECTOR VALVES - RDV

INTRODUCTION

The Dust Collector Valve is designed specifically for lighter duty applications, such as gravity flow or bottom of dust collectors handling light loads and non-abrasive products. These units have direct drive right angle gearboxes, inboard bearings and lip seals; making them very cost competitive.

These dust collector valves have been engineered and designed as a low cost solution for Cyclone, Bag House and Gravity Feed applications with pressures around +/- 3 psi.

SPECIFICATION

BODIES

Cast Iron Precision Bored.
Standard: Universal flanges to match Square or Circular connections.
Heavy Duty: Robust with either Square or Circular flanges.

END COVERS

Cast Iron Precision Machined and Spigot Located into Airlock Body

ROTOR

Fabricated Mild Steel Closed Tip (Shrouded) Type Fully Machined

BEARINGS

Ball Type Rigged Inboard Sealed for Life

SHAFT SEAL

Rubber Lip Seal

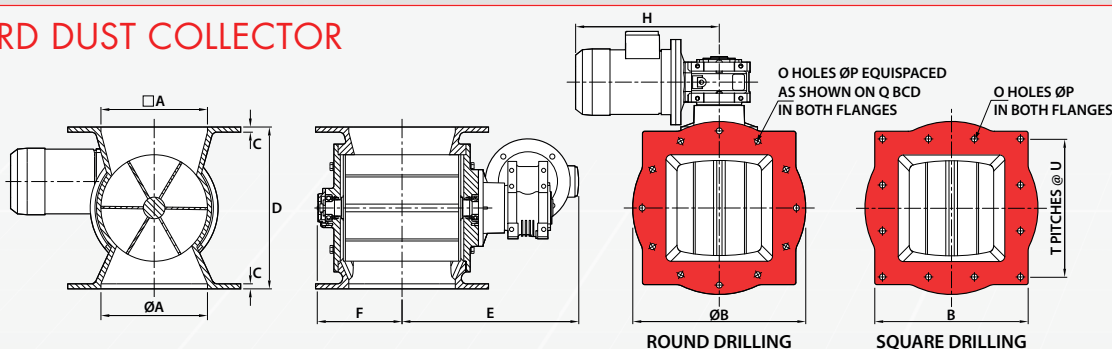
DRIVE

Motorised Worm Box Shaft Mounted on Rotor and Fitted with Standard NEMA Motor Totally Enclosed Flange Mounted to Worm Box

VALVE SPEED

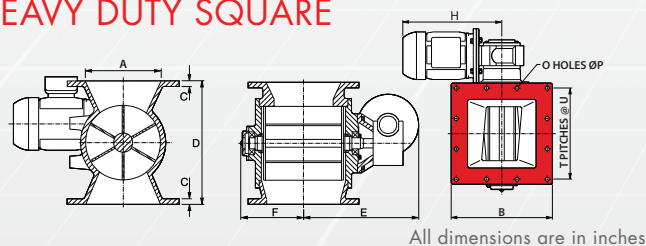
Standard - 28 RPM with 50Hz supply
Heavy Duty - 23 RPM with 50Hz supply

STANDARD DUST COLLECTOR



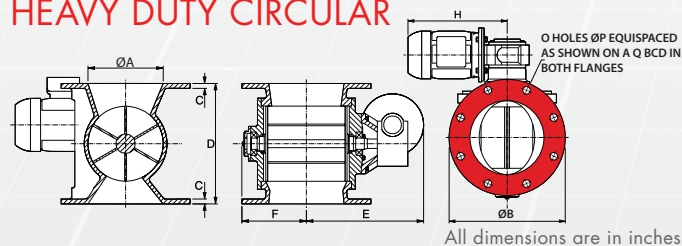
							ROUND DRILLING				SQUARE DRILLING					All dimensions are in inches		
SIZE	A	C	D	E	F	H	B	O	P	Q	B	O	P	T	U	kW	Weight (lbs)	ft³/rev
6	6	⅜	10	12 ½	5 ½	11 ⅜	11 ¼	8	⅞	9 ½	10	12	½	3	2 ¾	½	88	0.08
8	8	½	12 ⅜	13 ⅝	6 ⅝	11 ⅜	13 ½	8	⅞	11 ¾	11 ⅜	12	½	3	3 ⅜	½	132	0.21
10	10	½	15 ⅜	16 ⅝	7 ⅜	13 ¼	16	12	1	14 ¼	14 ⅜	12	⅝	3	4 ¼	¾	203	0.42
12	12	⅝	18 ⅝	17 ½	9	13 ¼	19 ⅝	12	1	17	17 ⅝	12	⅞	3	5 ⅜	¾	317	0.75

HEAVY DUTY SQUARE



SIZE	A	B	C	D	E	F	H	O	P	T	U	H.P.	Weight (lbs)	ft ³ /rev
6	6	9 3/4	1/2	11	11 1/8	5 3/4	14	12	1/2	3	2 3/4	1/2	152	0.08
8	8	11 1/8	3/4	13	12 3/8	6 3/4	14	12	1/2	3	3 1/16	1/2	183	0.21
10	10	13 3/4	5/8	15	13 13/16	8	15	12	5/8	3	4	3/4	256	0.42
12	12	15 3/4	1/2	18 1/8	15 1/4	9 3/8	15	12	1/2	3	4 1/16	3/4	386	0.75

HEAVY DUTY CIRCULAR



SIZE	A	B	C	D	E	F	H	O	P	Q	H.P.	Weight (lbs)	ft ³ /rev
6	6	11 1/4	1/2	10 3/8	11 1/8	5 3/4	14	8	7/8	9 1/2	1/2	152	0.08
8	8	12 1/2	3/4	12 3/8	12 3/8	6 3/4	14	8	1 1/16	11	1/2	183	0.21
10	10	14 1/2	5/8	15	13 13/16	7 7/8	15	8	1 1/16	12 3/8	3/4	256	0.42
12	12	17 3/4	3/4	18 3/8	15 1/4	9 3/8	15	12	7/8	15 1/2	3/4	386	0.75

Dimensions are approximate and subject to change without notice
Planning-in detail for general guidance only
(To cover safety aspects ask for our safety leaflets)
Drillings are Rotolok standards. Variations can be made.



www.ROTOLOK.us