

ROTOLOK

everything under control...



DOUBLE DUMP VALVE

ROTOLOK USA

Industrial Ventures II
2711 Gray Fox Road
Monroe
North Carolina
28110
United States of America
Tel: +1 (704) 282 4444
Fax: +1 (704) 282 4242
www.rotolok.us
sales@rotolok.us



INTRODUCTION

Suitable for discharging dry dust, powder, granules and fibrous materials from cyclones, filters, hoppers etc., whilst still maintaining an effective gas seal.

The valve consists of two flaps connected by counterweights or spring loaded spindles, which are operated by means of a motor driven cam. The cam alternately opens each flap allowing material to pass through the separate chambers in batch form and thereby ensuring a gas seal.

After cam release, the counterweights (or springs), return each flap to the up (sealed) position and are designed and sized so that a clapping action at the flaps is obtained, aiding material flow and preventing build up at the seal plate.

The unit is suitable for pressure differentials of up to 20" W.G. This can be increased with special features.

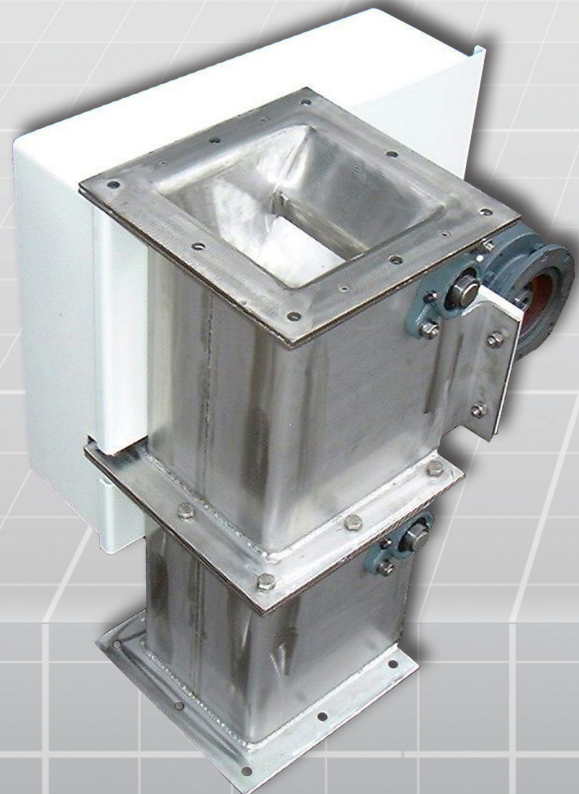
OPERATION

Units can be adapted for use on simple cyclone discharge systems. These are single flap counterweighted but non-motorised types. Product builds up on the flap until a sufficient head overcomes the counterweight. Discharge then commences and continues whilst material head exceeds counterweight and vacuum effects. Seal is partially maintained by product during discharge.

RANGE

Sizes available: 6", 8", 10" and 12" as standard, constructed with cast iron bodies, with round or square inlets. Larger sizes can be accommodated.

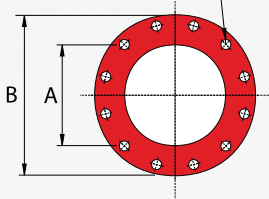
Rotolok makes a full range of fabricated types in mild steel and stainless steel, with specials up to a maximum of 30".



CAST DOUBLE DUMP VALVE

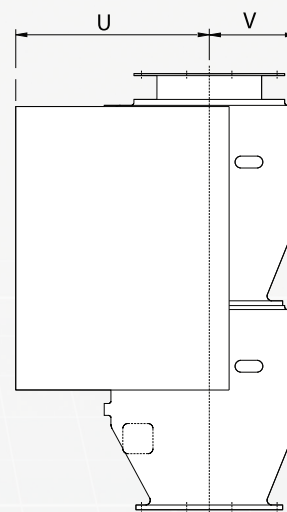
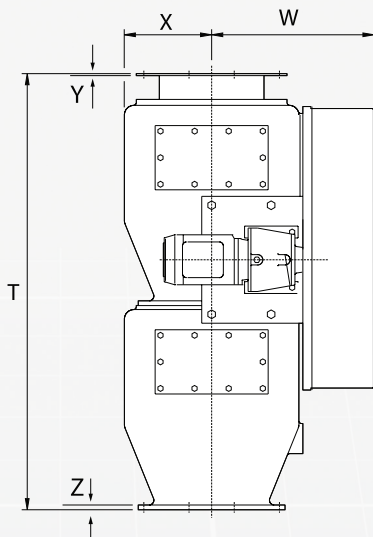
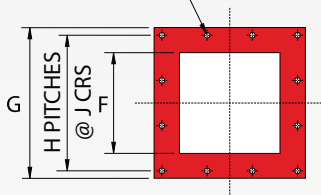
ROUND INLET

C HOLES D EQUISPACED
AS SHOWN ON E BCD

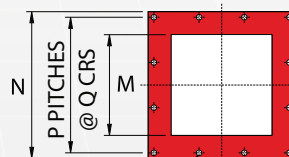


SQUARE INLET

K HOLES ØL



COMMON OUTLET



R HOLES S

All dimensions are in inches

CAST ROUND VERSION

SIZE	A	B	C	D	E	M	N	P	Q	R	S	T	U	V	W	X	Y	Z
6"	6"	11"	8	7/8"	9 1/2"	8"	12 5/8"	3	3 13/16"	12	9/16"	29 3/4"	16 5/8"	6 3/4"	14 7/8"	10 5/8"	3/16"	1/2"
8"	8"	13 1/2"	8	7/8"	11 3/4"	8"	12 5/8"	3	3 13/16"	12	9/16"	29 3/4"	16 5/8"	6 3/4"	14 7/8"	10 5/8"	3/16"	1/2"
10"	10"	16"	12	1"	14 1/4"	10"	14 5/8"	3	4 1/2"	12	9/16"	43 1/4"	20 3/8"	8 11/16"	16 3/4"	11 1/4"	3/16"	1/2"
12"	12"	16"	12	1"	17	10"	14 5/8"	3	4 1/2"	12	9/16"	43 1/4"	20 3/8"	9 1/2"	16 3/4"	10 5/8"	3/16"	1/2"

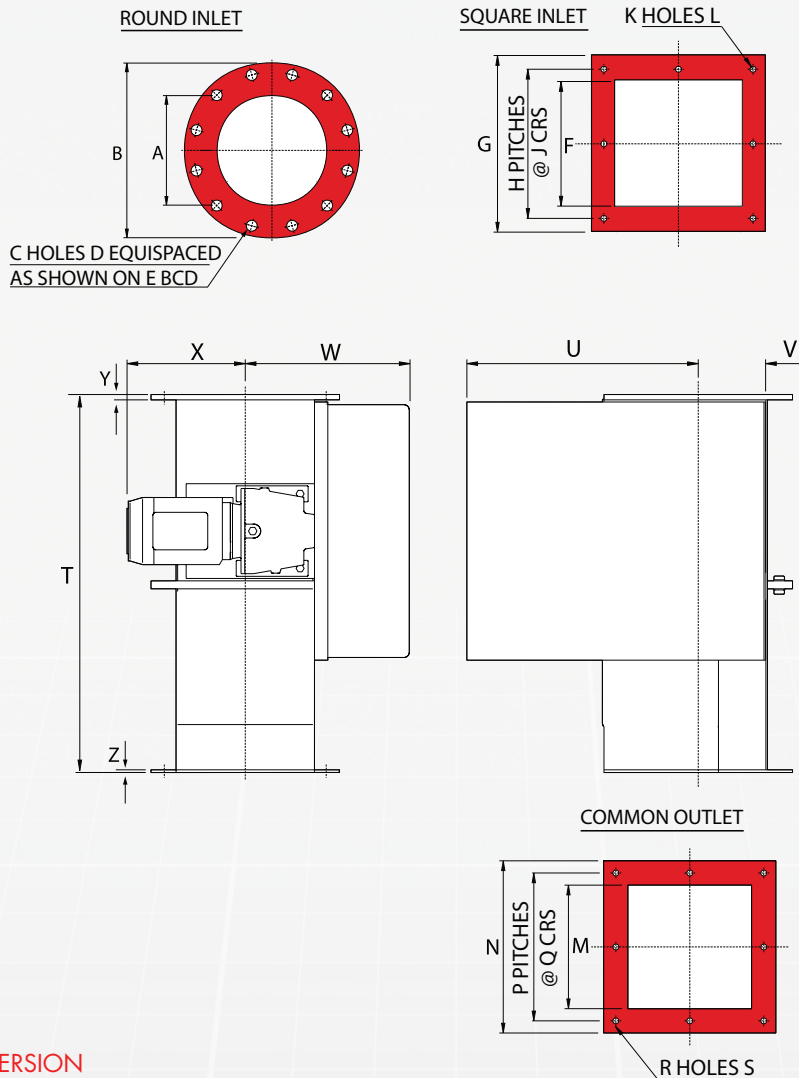
CAST SQUARE VERSION

SIZE	F	G	H	J	K	L	M	N	P	Q	R	S	T	U	V	W	X	Y	Z
6"	6"	10"	2	4 1/4"	8	9/16"	8"	12 5/8"	3	3 13/16"	12	9/16"	29 3/4"	16"	6 3/4"	14 7/8"	10 5/8"	3/16"	1/2"
8"	8"	12 5/8"	3	3 13/16"	12	9/16"	8"	12 5/8"	3	3 13/16"	12	9/16"	29 3/4"	16"	6 3/4"	14 7/8"	11 5/8"	3/16"	1/2"
10"	10"	15"	3	4 1/2"	12	9/16"	10"	14 5/8"	3	4 1/2"	12	9/16"	43 1/4"	19 1/4"	8 11/16"	16 3/4"	10 5/8"	3/16"	1/2"
12"	12"	17 3/8"	3	5 1/16"	12	9/16"	10"	14 5/8"	3	4 1/2"	12	9/16"	43 1/4"	19 1/4"	8 11/16"	16 3/4"	10 5/8"	3/16"	1/2"

Dimensions are approximate and subject to change without notice
 Planning-in detail for general guidance only
 (To cover safety aspects ask for our safety leaflets)
 Drillings are Rotolok standards. Variations can be made.



FABRICATED DOUBLE DUMP VALVE



FABRICATED ROUND VERSION

SIZE	A	B	C	D	E	M	N	P	Q	R	S	T	U	V	W	X	Y	Z
6"	6"	11"	8	7/8"	9 1/2"	6"	9 7/8"	2	4 1/4"	8	1/2"	29 3/4"	17 1/4"	6 1/4"	10 7/8"	13 1/2"	3/16"	3/16"
8"	8"	13 1/2"	8	7/8"	11 3/4"	8"	12"	2	5"	8	1/2"	29 3/4"	16 1/8"	6 3/4"	11 13/16"	14 5/8"	3/16"	3/16"
10"	10"	16"	12	1"	14 1/4"	10"	14"	2	6"	8	1/2"	30 1/16"	18 5/8"	8"	12 7/8"	13 1/2"	3/16"	3/16"
12"	12"	19"	12	1"	17"	12"	16"	3	4 11/16"	12	9/16"	30 3/4"	20 1/2"	9 1/2"	13 3/4"	9 1/2"	3/16"	3/16"
14"	14"	21"	12	1 1/8"	18 3/4"	14"	18"	4	4"	16	9/16"	43 5/16"	22"	10 1/2"	14 7/8"	10 1/2"	3/16"	3/16"

FABRICATED SQUARE VERSION

SIZE	F	G	H	J	K	L	M	N	P	Q	R	S	T	U	V	W	X	Y	Z
6"	6"	9 7/8"	2	4 1/4"	8	1/2"	6"	9 7/8"	2	4 1/4"	8	1/2"	28"	17 1/4"	6 1/4"	10 7/8"	11 3/4"	3/8"	3/16"
8"	8"	12"	2	5"	8	1/2"	8"	12"	2	5"	8	1/2"	28"	16 1/8"	6 3/4"	11 3/4"	14 5/8"	3/8"	3/16"
10"	10"	14"	2	6"	8	1/2"	10"	14"	2	6"	8	1/2"	28"	17 5/8"	7"	12 3/4"	13 1/2"	3/8"	3/16"
12"	12"	16"	3	4 1/16"	12	9/16"	12"	16"	3	4 11/16"	12	9/16"	28"	20 1/2"	8"	13 3/4"	9 1/2"	3/8"	3/16"
14"	14"	18"	4	4"	16	9/16"	14"	18"	4	4"	16	9/16"	40 1/2"	22"	9"	14 7/8"	9"	3/8"	3/16"

Dimensions are approximate and subject to change without notice
 Planning-in detail for general guidance only
 (To cover safety aspects ask for our safety leaflets)
 Drillings are Rotolok standards. Variations can be made.

